

Image may differ from product. See technical specification for details.

## SNL 513-611

### Split plummer (pillow) block housing, SNL 2, 3, 5 and 6 series

SNL plummer (pillow) block housings are the most popular SKF bearing housings on the market, developed to be the first choice for design, quality and economy. They enable the incorporated bearings to achieve maximum service life with less need for maintenance. Different housing variants and seal designs are available, making the use of tailored housings virtually unnecessary and enabling cost-effective bearing arrangements to be made.

- Easy to install
- Cost-effective bearing arrangement
- Reduce maintenance
- Minimize lubricant leakage

## Overview

### Dimensions

Diameter of bearing seat	120 mm
Width of bearing seat	51 mm
Centre height (pillow block)	80 mm
Centre distance between bolt holes	230 mm
Attachment bolt diameter	16 mm

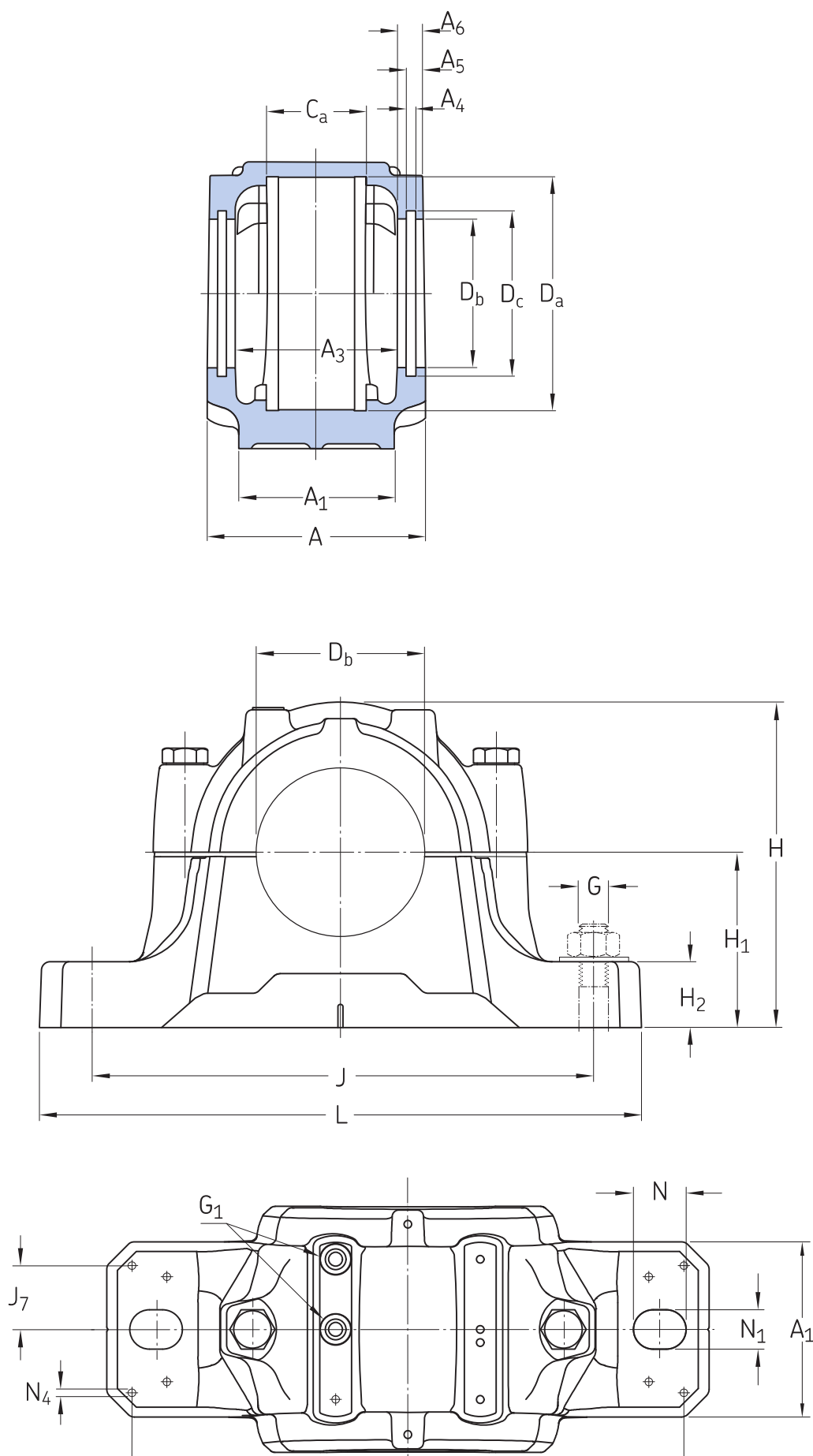
### Properties

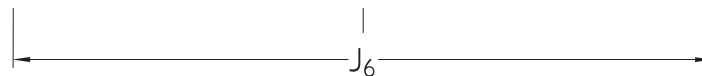
Housing type	Plummer/pillow block
Housing configuration	Two-piece
Mounting arrangement	Through shaft/Shaft end
Number of bolt holes for fasteners	2
Material, housing	Cast iron
Bearing housing seal type	Without
Housing lubrication feature/possibility	Grease

### Logistics

Product net weight	7 kg
eClass code	23-05-17-01
UNSPSC code	31171519

## Technical specification





## Dimensions

### BEARING SEAT

$D_a$	120 mm	Diameter of bearing seat
	G7	Tolerance class of bearing seat diameter
$C_a$	51 mm	Width of bearing seat
$H_1$	80 mm	Centre height of bearing seat

### OUTSIDE DIMENSIONS

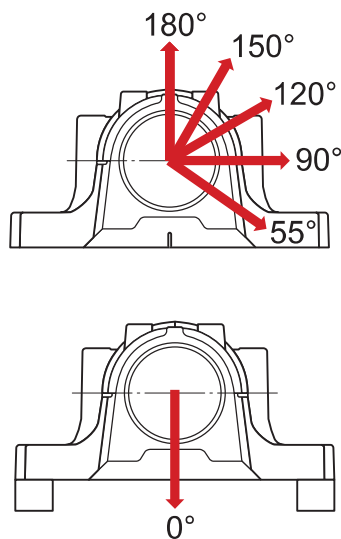
$D_b$	77 mm	Bore diameter
$A$	110 mm	Overall width
$A_1$	80 mm	Foot width
$G_1$	1/8-27 NPSF	Thread of relubrication holes
$H$	149 mm	Overall height
$H_2$	30 mm	Foot height
$L$	275 mm	Overall length
$J$	230 mm	Distance between attachment bolts
$N$	24 mm	Length of attachment bolt hole
$N_1$	18 mm	Width of attachment bolt hole

### SEAL GROOVES

$A_3$	83 mm	Inside width between seal grooves
$A_4$	5 mm	Width of seal groove
$A_5$	9 mm	Distance to seal groove back face
$A_6$	1.3 mm	Width at bore diameter
$D_c$	85.5 mm	Diameter of seal groove

## DOWEL PINS

$J_6$	252 mm	Distance between dowel pins
$J_7$	29 mm	Axial offset of dowel pins
$N_4$	max. 8 mm	Diameter of dowel pins



## Calculation data

### BREAKING LOADS

$P_{0^\circ}$	270 kN	Breaking load at $0^\circ$ load angle
$P_{55^\circ}$	340 kN	Breaking load at $55^\circ$ load angle
$P_{90^\circ}$	205 kN	Breaking load at $90^\circ$ load angle
$P_{120^\circ}$	150 kN	Breaking load at $120^\circ$ load angle
$P_{150^\circ}$	130 kN	Breaking load at $150^\circ$ load angle
$P_{180^\circ}$	170 kN	Breaking load at $180^\circ$ load angle
$P_a$	110 kN	Breaking load, axial

### YIELD POINTS OF CAP BOLTS

$Q_{120^\circ}$	220 kN	Load to reach yield point at $120^\circ$ load angle
$Q_{150^\circ}$	125 kN	Load to reach yield point at $150^\circ$ load angle

Q <sub>180°</sub>	110 kN	Load to reach yield point at 180° load angle
-------------------	--------	--

Materials

Housing material	Cast iron
Corrosion protection	Paint - in accordance with ISO 12944-2, corrosivity category C2

Mounting information

Recommended diameter of attachment bolts	G	16 mm
Recommended tightening torque for attachment bolts		200 N·m
Size of cap bolts		M12x65
Tightening torque for cap bolts		80 N·m
Initial grease fill, 20%		100 g
Initial grease fill, 40%		160 g

Included products

Grease fitting	AH 1/8-27 PTF
----------------	---------------