



Image may differ from product. See technical specification for details.

SNL 216

Split plummer (pillow) block housing, SNL 2, 3, 5 and 6 series

SNL plummer (pillow) block housings are the most popular SKF bearing housings on the market, developed to be the first choice for design, quality and economy. They enable the incorporated bearings to achieve maximum service life with less need for maintenance. Different housing variants and seal designs are available, making the use of tailored housings virtually unnecessary and enabling cost-effective bearing arrangements to be made.

- Easy to install
- Cost-effective bearing arrangement
- Reduce maintenance
- Minimize lubricant leakage

Overview

Dimensions

Diameter of bearing seat	140 mm
Width of bearing seat	58 mm
Centre height (pillow block)	95 mm
Centre distance between bolt holes	260 mm
Attachment bolt diameter	20 mm

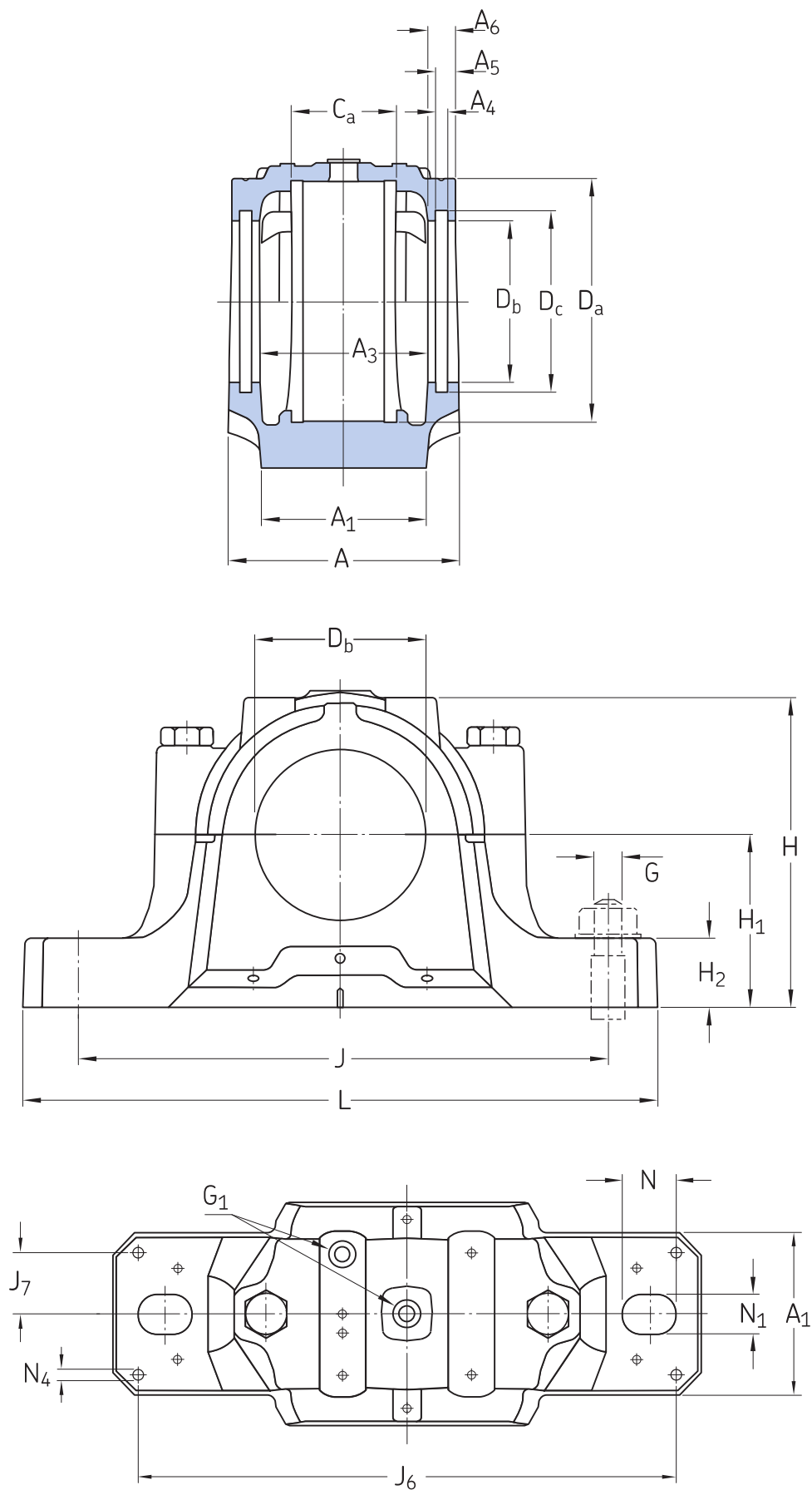
Properties

Housing type	Plummer/pillow block
Housing configuration	Two-piece
Mounting arrangement	Through shaft/Shaft end
Number of bolt holes for fasteners	2
Material, housing	Cast iron
Bearing housing seal type	Without
Housing lubrication feature/possibility	Grease

Logistics

Product net weight	8.95 kg
eClass code	23-05-17-01
UNSPSC code	31171519

Technical specification



Dimensions

BEARING SEAT

D _a	140 mm	Diameter of bearing seat
	G7	Tolerance class of bearing seat diameter
C _a	58 mm	Width of bearing seat
H ₁	95 mm	Centre height of bearing seat

OUTSIDE DIMENSIONS

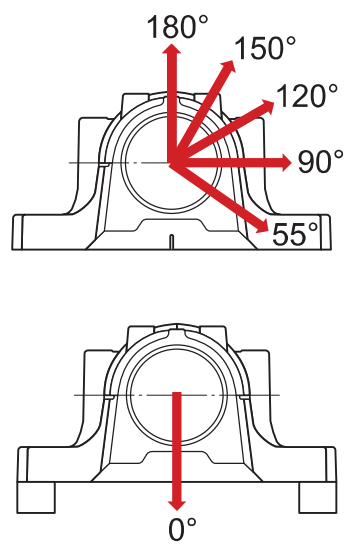
D _b	108 mm	Bore diameter
A	120 mm	Overall width
A ₁	90 mm	Foot width
G ₁	1/8-27 NPSF	Thread of relubrication holes
H	177 mm	Overall height
H ₂	32 mm	Foot height
L	315 mm	Overall length
J	260 mm	Distance between attachment bolts
N	28 mm	Length of attachment bolt hole
N ₁	22 mm	Width of attachment bolt hole

SEAL GROOVES

A ₃	92 mm	Inside width between seal grooves
A ₄	5 mm	Width of seal groove
A ₅	9 mm	Distance to seal groove back face
A ₆	13 mm	Width at bore diameter
D _c	116.5 mm	Diameter of seal groove

DOWEL PINS

J ₆	288 mm	Distance between dowel pins
J ₇	33 mm	Axial offset of dowel pins
N ₄	max. 8 mm	Diameter of dowel pins



Calculation data

BREAKING LOADS

P _{0°}	350 kN	Breaking load at 0° load angle
P _{55°}	430 kN	Breaking load at 55° load angle
P _{90°}	260 kN	Breaking load at 90° load angle
P _{120°}	190 kN	Breaking load at 120° load angle
P _{150°}	175 kN	Breaking load at 150° load angle
P _{180°}	215 kN	Breaking load at 180° load angle
P _a	140 kN	Breaking load, axial

YIELD POINTS OF CAP BOLTS

Q _{120°}	220 kN	Load to reach yield point at 120° load angle
Q _{150°}	125 kN	Load to reach yield point at 150° load angle

Q _{180°}	110 kN	Load to reach yield point at 180° load angle
-------------------	--------	--

Materials

Housing material	Cast iron
Corrosion protection	Paint - in accordance with ISO 12944-2, corrosivity category C2

Mounting information

Recommended diameter of attachment bolts	G	20 mm
Recommended tightening torque for attachment bolts		385 N·m
Size of cap bolts		M 12x70
Tightening torque for cap bolts		80 N·m
Initial grease fill, 20%		170 g
Initial grease fill, 40%		280 g

Included products

Grease fitting	AH 1/8-27 PTF
----------------	---------------