

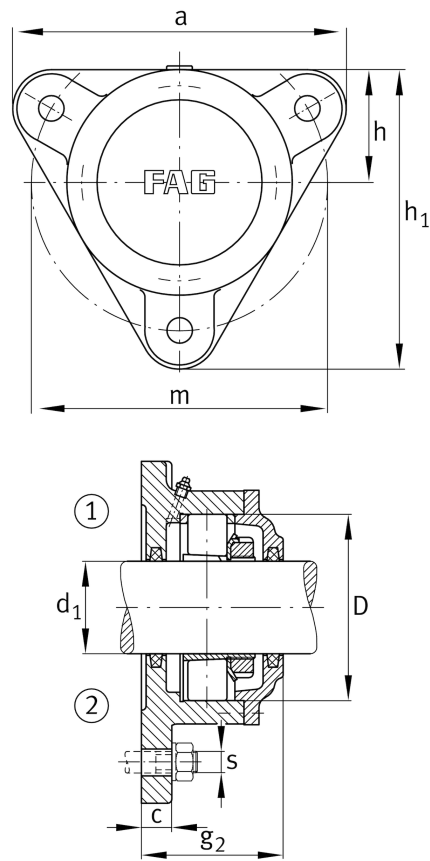
FAG

F511-WB-L

Flanged housing

Flanged housing for various bearing types,
wide version with conical bore and clamping
sleeve, continuous shaft

Technical information



Main Dimensions & Performance Data

d ₁	50 mm	Shaft diameter
a	190 mm	Flange width
h ₁	170 mm	height flange
g ₂	82 mm	Total width with lid g ₂
	3	number of fastening holes
≈m	4,394 kg	Weight

Dimensions

	M10x1	Connection thread for lubrication
c	16 mm	thickness of flange
D	100 mm	outside diameter bearing
g ₄	25 mm	distance flange to bearing seat
h	65 mm	distance shaft axis
m	170 mm	pich circle diameter fixing holes
s	M12	size of fixing screws