



Image may differ from product. See technical specification for details.

FNL 511 A

FNL cast flanged, non-split housing

FNL cast flanged, non-split housings are well-proven machine parts that provide simple and reliable housing in applications without horizontal frames. They enable the full service life potential of the incorporated bearings to be exploited with less need for maintenance. FNL housings are supplied with a cover either for shaft ends (suffix A) or for through shafts (suffix B). Smaller sizes (up to and including size 13) have a triangular flange, larger sizes have a square flange.

- Well-proven
- Less need for maintenance

Overview

Dimensions

Diameter of bearing seat	100 mm
Pitch diameter of bolt holes of round and triangle flange type housing	170 mm
Attachment bolt diameter	12 mm

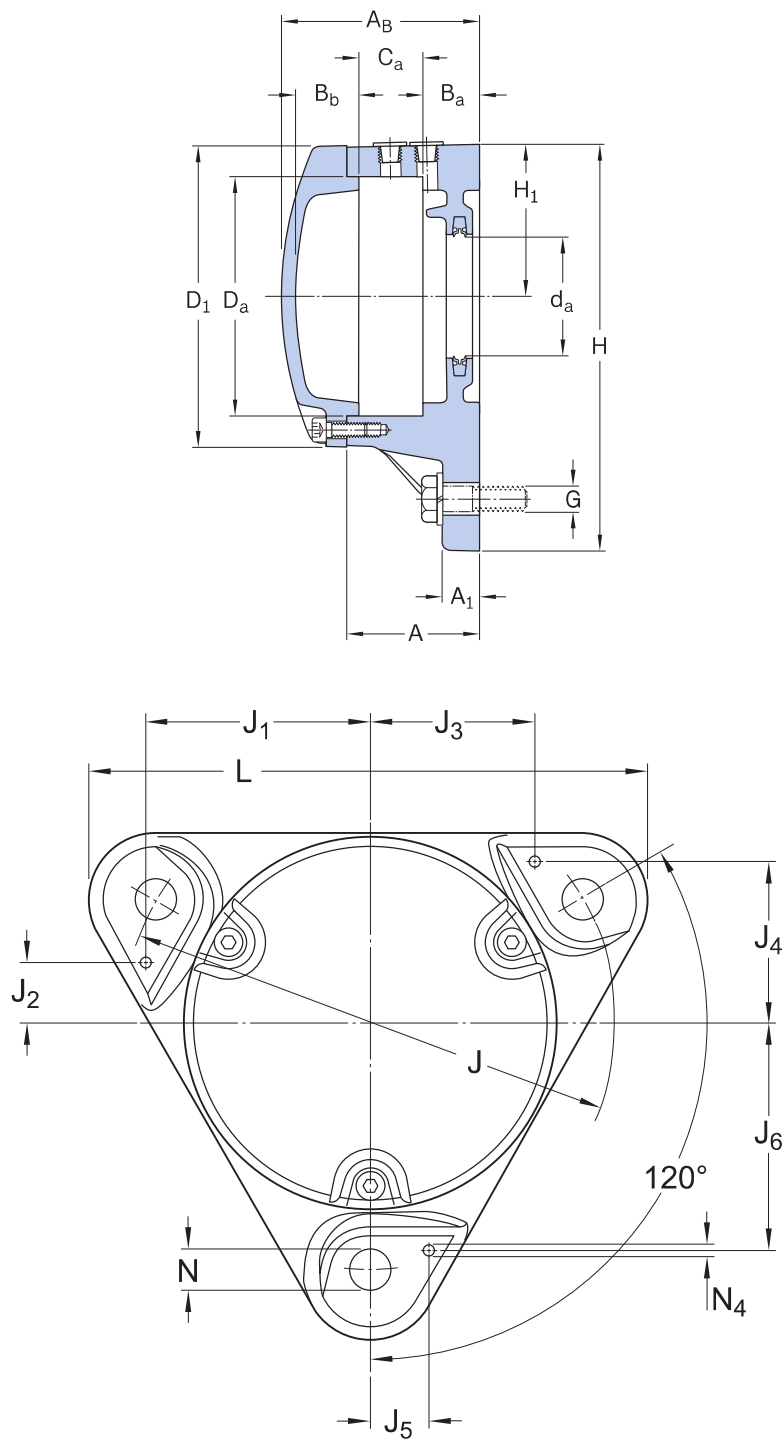
Properties

Housing type	Flanged
Housing configuration	One-piece
Mounting arrangement	Shaft end
Number of bolt holes for fasteners	3
Material, housing	Cast iron
Bearing housing seal type	Lip seal
Housing lubrication feature/possibility	Grease

Logistics

Product net weight	4.49 kg
eClass code	23-05-17-01
UNSPSC code	31171519

Technical specification



Dimensions

BEARING SEAT

D_a	100 mm	Diameter of bearing seat
-------	--------	--------------------------

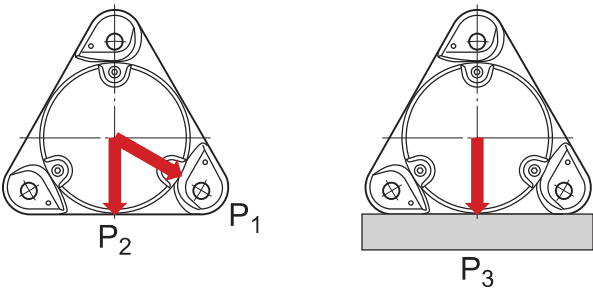
C _a	27 mm	Width of bearing seat
H ₁	65 mm	Centre height of bearing seat
B _a	24 mm	Distance bearing seat to support surface
B _b	23 mm	Distance bearing seat to inner face of end cover

OUTSIDE DIMENSIONS

d _a	50 mm	Shaft diameter
A	56 mm	Base width
A ₁	15 mm	Foot width
A _Λ	84 mm	Width
D ₁	127 mm	Outside diameter of housing cover
H	172.5 mm	Height
J	170 mm	Pitch diameter of attachment bolts
L	192 mm	Length
N	14 mm	Diameter of attachment bolt hole

DOWEL PINS

J ₁	77 mm	Position of dowel pin
J ₂	21 mm	Position of dowel pin
J ₃	57 mm	Position of dowel pin
J ₄	56 mm	Position of dowel pin
J ₅	21 mm	Position of dowel pin
J ₆	77 mm	Position of dowel pin
N _{4 max.}	6 mm	Diameter of dowel pins



Breaking loads

P ₁	110 kN	Breaking load
P ₂	80 kN	Breaking load
P ₃	110 kN	Breaking load

Materials

Housing	Cast iron
---------	-----------

Mounting information

Size of cover bolt		M6x20
Recommended tightening torque for cover bolts		10 N·m
Recommended diameter of attachment bolts	G	12 mm
Recommended tightening torque for attachment bolts		80 N·m
Initial grease fill, 20%		35 g
Initial grease fill, 40%		61 g

Compatible products

Component

Double-lip seal	TFL 511
-----------------	-------------------------