

FAG

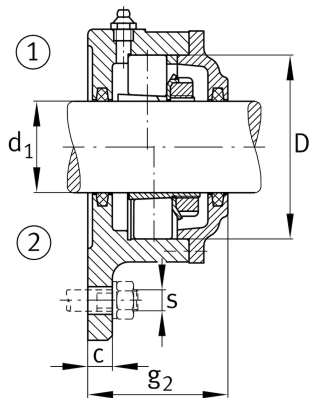
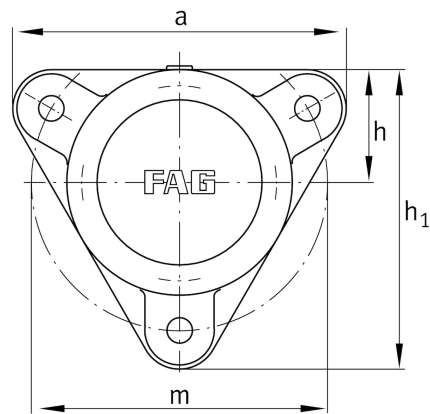
F509-B-L

Flanged housing

Schaeffler ID:
0167287000000

Flanged housing for various bearing types,
with conical bore and clamping sleeve,
continuous shaft

Technical information



Main Dimensions & Performance Data

d ₁	40 mm	Shaft diameter
a	180 mm	Flange width
h ₁	160 mm	height flange
g ₂	70 mm	Total width with lid g ₂
	3	number of fastening holes
≈m	3,479 kg	Weight

Dimensions

	M10x1	Connection thread for lubrication
c	15 mm	thickness of flange
D	85 mm	outside diameter bearing
g ₄	22 mm	distance flange to bearing seat
h	60 mm	distance shaft axis
m	160 mm	pich circle diameter fixing holes
s	M12	size of fixing screws