



Image may differ from product. See technical specification for details.

## FNL 520 B

### FNL cast flanged, non-split housing

FNL cast flanged, non-split housings are well-proven machine parts that provide simple and reliable housing in applications without horizontal frames. They enable the full service life potential of the incorporated bearings to be exploited with less need for maintenance. FNL housings are supplied with a cover either for shaft ends (suffix A) or for through shafts (suffix B). Smaller sizes (up to and including size 13) have a triangular flange, larger sizes have a square flange.

- Well-proven
- Less need for maintenance

## Overview

### Dimensions

Diameter of bearing seat	180 mm
Centre distance between bolt holes	198 mm
Attachment bolt diameter	20 mm

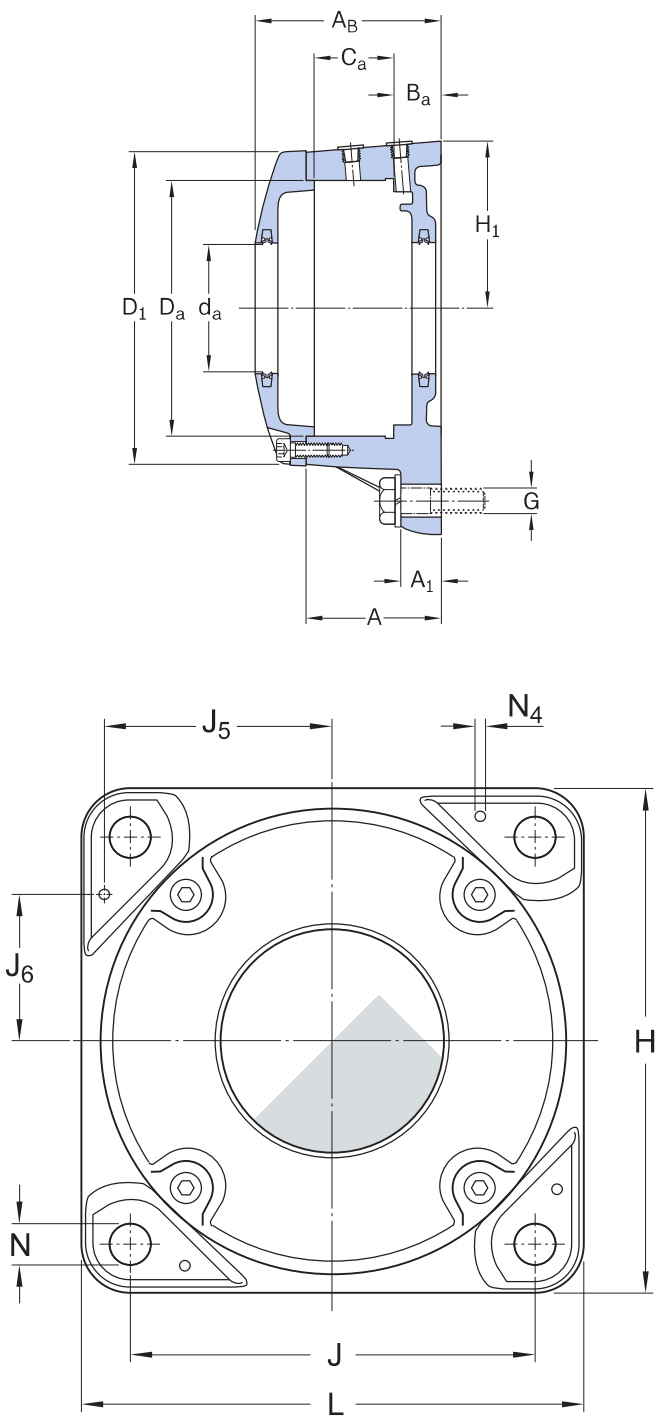
### Properties

Housing type	Flanged
Housing configuration	One-piece
Mounting arrangement	Through shaft
Number of bolt holes for fasteners	4
Material, housing	Cast iron
Bearing housing seal type	Lip seal
Housing lubrication feature/possibility	Grease

### Logistics

Product net weight	19.1 kg
eClass code	23-05-17-01
UNSPSC code	31171519

Technical specification



Dimensions

BEARING SEAT

$D_a$	180 mm	Diameter of bearing seat
$C_a$	56 mm	Width of bearing seat

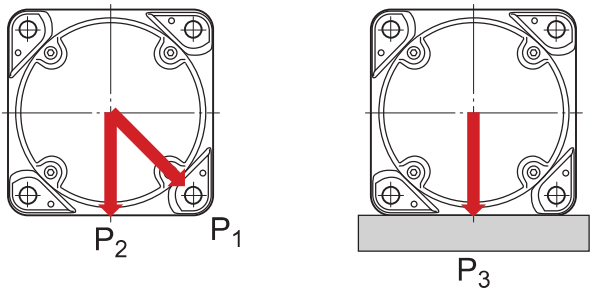
$H_1$	125 mm	Centre height of bearing seat
$B_a$	30 mm	Distance bearing seat to support surface

OUTSIDE DIMENSIONS

$d_a$	90 mm	Shaft diameter
$A$	91 mm	Base width
$A_1$	30 mm	Foot width
$A_B$	127 mm	Width
$D_1$	224 mm	Outside diameter of housing cover
$H$	250 mm	Height
$L$	250 mm	Length
$J$	198 mm	Distance between attachment bolts
$N$	22 mm	Diameter of attachment bolt hole

DOWEL PINS

$J_5$	112 mm	Position of dowel pin
$J_6$	72 mm	Position of dowel pin
$N_{4\text{ max.}}$	8 mm	Diameter of dowel pins



Breaking loads

$P_1$	180 kN	Breaking load
$P_2$	185 kN	Breaking load

P <sub>3</sub>	565 kN	Breaking load
----------------	--------	---------------

Materials

Housing	Cast iron
---------	-----------

Mounting information

Size of cover bolt		M10x30
Recommended tightening torque for cover bolts		47 N·m
Recommended diameter of attachment bolts	G	20 mm
Recommended tightening torque for attachment bolts		385 N·m
Initial grease fill, 20%		162 g
Initial grease fill, 40%		273 g

Compatible products

Component

Double-lip seal	2 x TFL 520
-----------------	-------------