



Image may differ from product. See technical specification for details.

FNL 507 B

FNL cast flanged, non-split housing

FNL cast flanged, non-split housings are well-proven machine parts that provide simple and reliable housing in applications without horizontal frames. They enable the full service life potential of the incorporated bearings to be exploited with less need for maintenance. FNL housings are supplied with a cover either for shaft ends (suffix A) or for through shafts (suffix B). Smaller sizes (up to and including size 13) have a triangular flange, larger sizes have a square flange.

- Well-proven
- Less need for maintenance

Overview

Dimensions

Diameter of bearing seat	72 mm
Pitch diameter of bolt holes of round and triangle flange type housing	130 mm
Attachment bolt diameter	12 mm

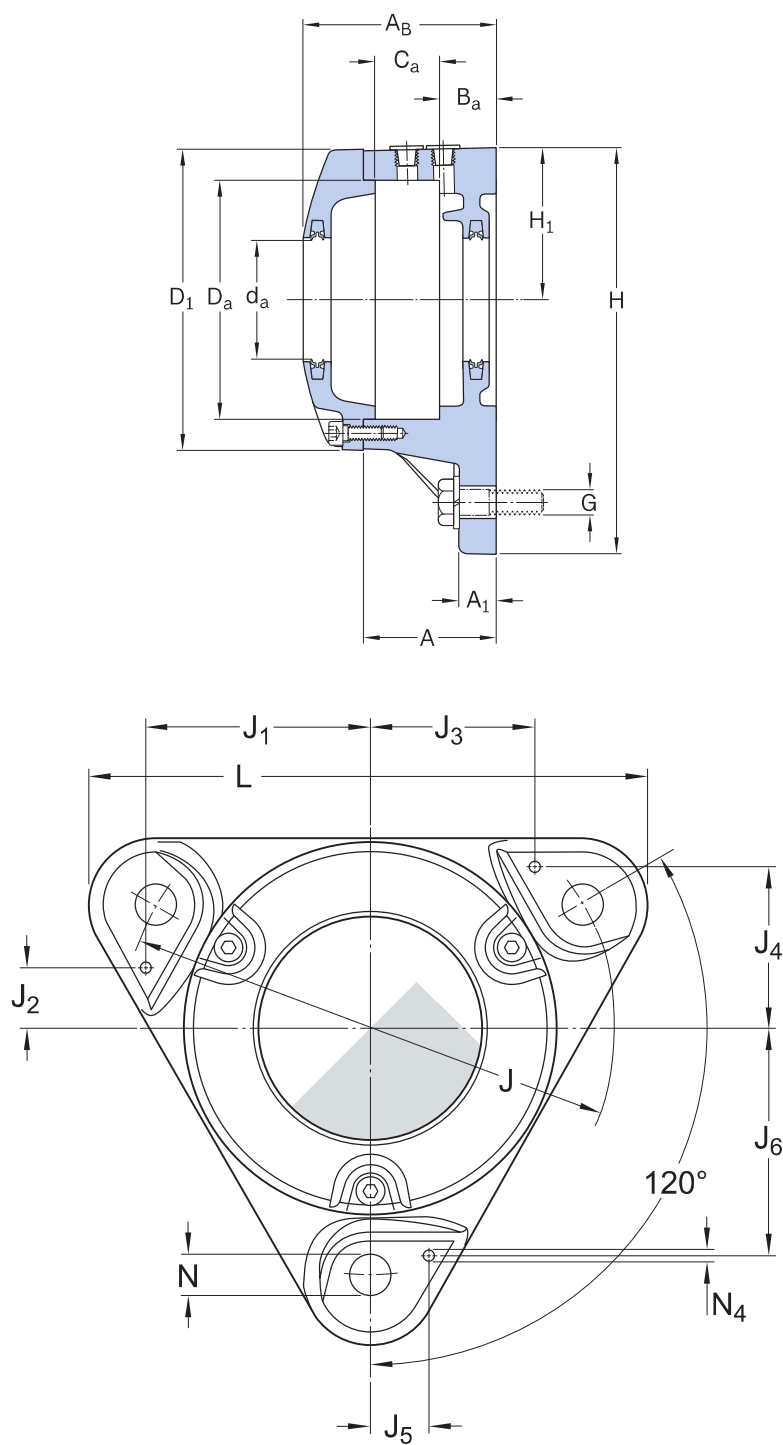
Properties

Housing type	Flanged
Housing configuration	One-piece
Mounting arrangement	Through shaft
Number of bolt holes for fasteners	3
Material, housing	Cast iron
Bearing housing seal type	Lip seal
Housing lubrication feature/possibility	Grease

Logistics

Product net weight	1.85 kg
eClass code	23-05-17-01
UNSPSC code	31171519

Technical specification



Dimensions

BEARING SEAT

D_a	72 mm	Diameter of bearing seat
-------	-------	--------------------------

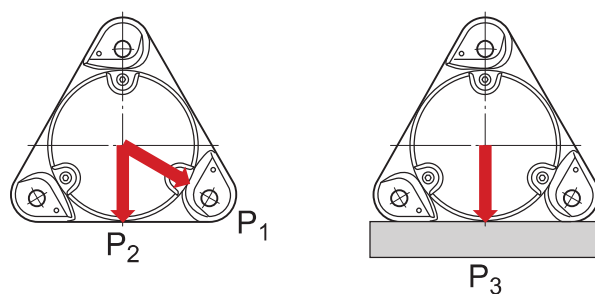
C_a	25 mm	Width of bearing seat
H_1	48.5 mm	Centre height of bearing seat
B_a	16 mm	Distance bearing seat to support surface

OUTSIDE DIMENSIONS

d_a	30 mm	Shaft diameter
A	45 mm	Base width
A_1	12 mm	Foot width
A_B	64 mm	Width
D_1	95 mm	Outside diameter of housing cover
H	130 mm	Height
J	130 mm	Pitch diameter of attachment bolts
L	145 mm	Length
N	14 mm	Diameter of attachment bolt hole

DOWEL PINS

J_1	57 mm	Position of dowel pin
J_2	16 mm	Position of dowel pin
J_3	42 mm	Position of dowel pin
J_4	41 mm	Position of dowel pin
J_5	15 mm	Position of dowel pin
J_6	57 mm	Position of dowel pin
$N_{4 \max.}$	5 mm	Diameter of dowel pins



Breaking loads

P_1	70 kN	Breaking load
P_2	50 kN	Breaking load
P_3	90 kN	Breaking load

Materials

Housing	Cast iron
---------	-----------

Mounting information

Size of cover bolt		M5x16
Recommended tightening torque for cover bolts		6 N·m
Recommended diameter of attachment bolts	G	12 mm
Recommended tightening torque for attachment bolts		80 N·m
Initial grease fill, 20%		12 g
Initial grease fill, 40%		18 g

Compatible products

Component

Double-lip seal	2 x TFL 507
-----------------	-----------------------------