



FAG

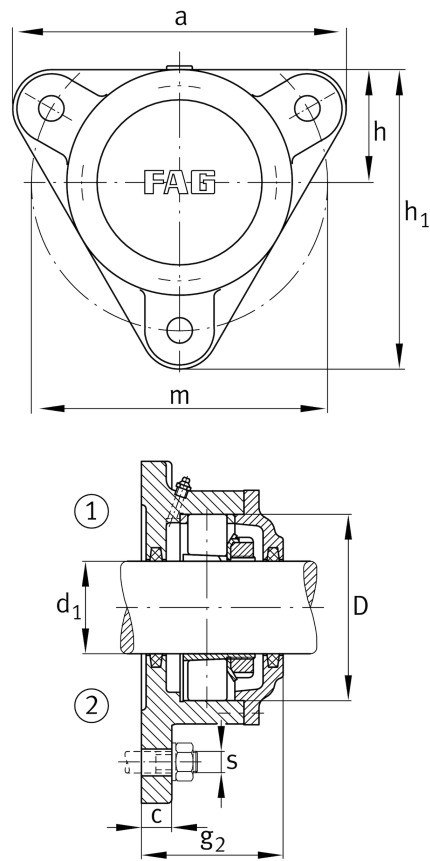
F509-WB-L

Flanged housing

Schaeffler ID:
0383829540000

Flanged housing for various bearing types, wide version with conical bore and clamping sleeve, continuous shaft

Technical information



Main Dimensions & Performance Data

d ₁	40 mm	Shaft diameter
a	180 mm	Flange width
h ₁	160 mm	height flange
g ₂	74 mm	Total width with lid g ₂
	3	number of fastening holes
≈m	3,629 kg	Weight

Dimensions

	M10x1	Connection thread for lubrication
c	15 mm	thickness of flange
D	85 mm	outside diameter bearing
g ₄	22 mm	distance flange to bearing seat
h	60 mm	distance shaft axis
m	160 mm	pich circle diameter fixing holes
s	M12	size of fixing screws