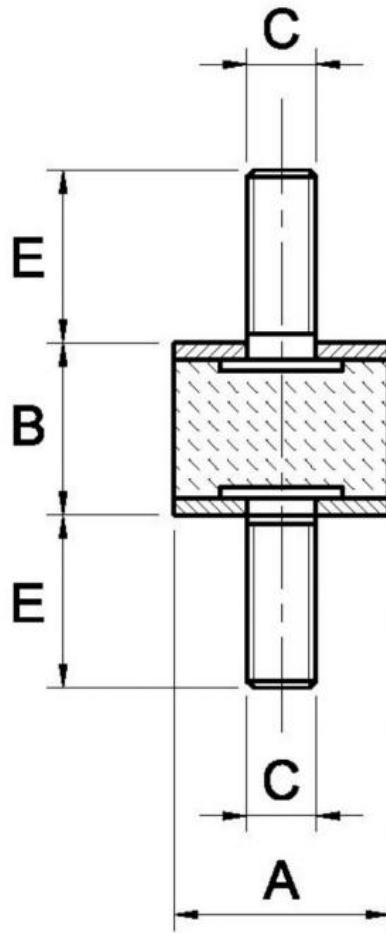


A1 Zinc Plated Cylindrical Mountings - SERIES MM Type A (Double Male)



Characteristics

Main Part Material: NR/SBR Rubber Compound

Standard Hardness: 60 Shore A

Hardness Tolerance: +/- 5 SH

On request: Different Screw Lengths

Metallic Part Material & Finishing: Zinc Plated Screw and Washer

Standard Thread: Screw pressed on the washer

Code	A	B	C	E	Max Compression Load daN	Max Shear Load daN	Packing Pcs.
A1MM1310	13	10	M5	10	15	2	1
A1MM1510	15	10	M4	10	15	2	1
A1MM1515	15	15	M4	14	15	2	1
A1MM1515L	15	15	M4	19	15	2	1
A1MM2010	20	10	M6	16	36	3	1
A1MM2015	20	15	M6	16	34	4	1
A1MM2020	20	20	M6	16	34	2	1
A1MM2025	20	25	M6	16	24	2	1
A1MM2030	20	30	M6	16	24	3	1
A1MM2510	25	10	M6	20	35	5	1
A1MM2515	25	15	M6	18	35	5	1
A1MM2520/6	25	20	M6	18	45	5	1
A1MM2520/8	25	20	M8	20	45	5	1
A1MM2525	25	25	M6	18	40	5	1

Code	A	B	C	E	Max Compression Load daN	Max Shear Load daN	Packing Pcs.
A1MM2530/6	25	30	M6	18	34	3	1
A1MM2530/8	25	30	M8	20	34	3	1
A1MM3015	30	15	M8	23	42	9	1
A1MM3020-15	30	20	M8	15	66	9	1
A1MM3020	30	20	M8	23	66	9	1
A1MM3025	30	25	M8	20	66	9	1
A1MM3030	30	30	M8	23	61	7	1
A1MM3040	30	40	M8	23	55	5	1
A1MM4020	40	20	M8	23	63	12	1
A1MM4030/10	40	30	M10	28	98	15	1
A1MM4030/8	40	30	M8	23	98	15	1
A1MM4035	40	35	M8	23	88	13	1
A1MM4040/10	40	40	M10	28	107	13	1
A1MM4040/8	40	40	M8	23	107	13	1
A1MM5020	50	20	M10	28	168	21	1
A1MM5030	50	30	M10	28	158	19	1
A1MM5040	50	40	M10	28	143	17	1
A1MM5045	50	45	M10	28	136	16	1
A1MM5050	50	50	M10	28	133	13	1
A1MM6030/12	60	30	M12	37	172	36	1
A1MM6040/12	60	40	M12	37	169	28	1
A1MM6050/10	60	50	M10	35	199	24	1
A1MM6050/12	60	50	M12	37	199	24	1
A1MM6535	65	35	M12	37	300	46	1
A1MM6550	65	50	M12	37	230	23	1
A1MM7040/10	70	40	M10	28	210	40	1
A1MM7050/10	70	50	M10	28	230	55	1
A1MM7050/12	70	50	M12	37	230	55	1
A1MM7525	75	25	M12	37	382	89	1
A1MM7540	75	40	M12	37	377	79	1
A1MM7550	75	50	M12	37	372	69	1
A1MM10030	100	30	M16	45	700	110	1
A1MM10040	100	40	M16	45	685	99	1
A1MM10050	100	50	M16	45	560	99	1
A1MM10055	100	55	M16	45	635	79	1
A1MM10060	100	60	M16	45	587	49	1